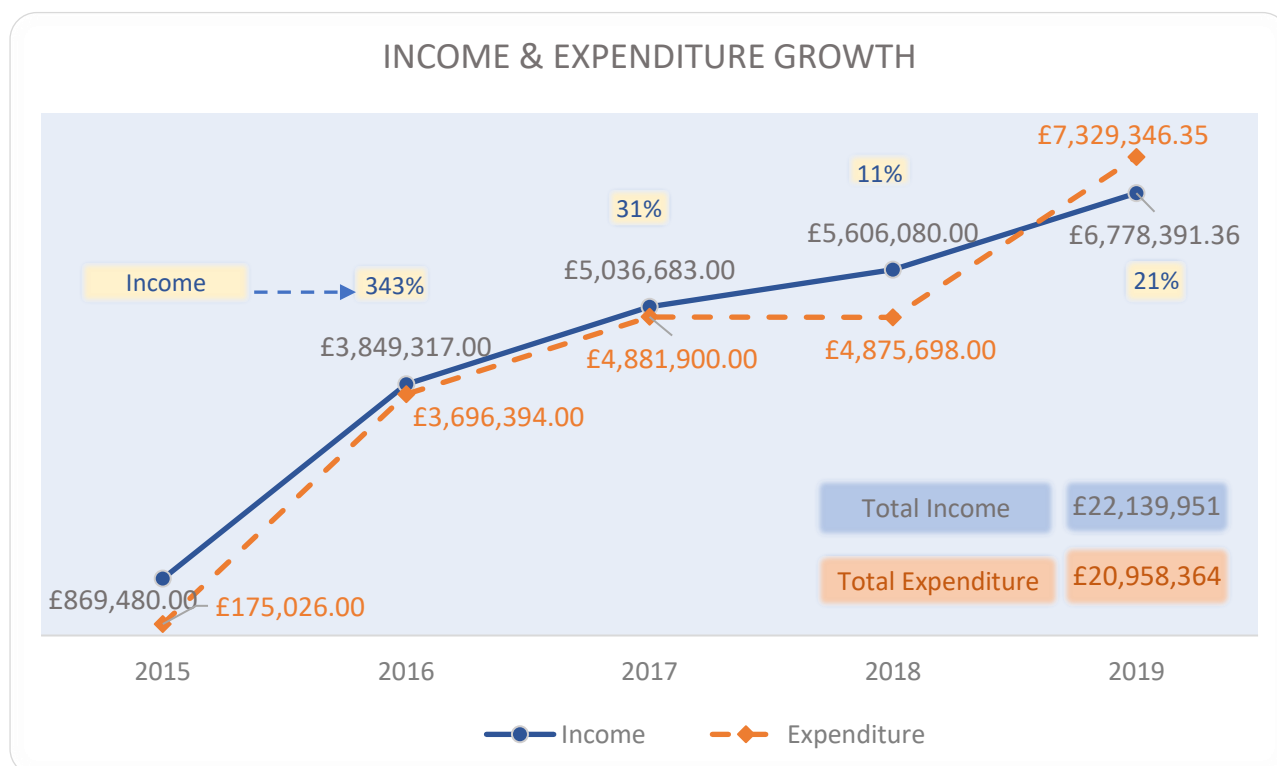


ANNUAL ACCOUNTS 2019

	2019	2018	2017
Income (£)	£6,778,391	£5,606,080	£5,036,684
Expenditure (£)	£7,329,346	£4,875,699	£4,881,900

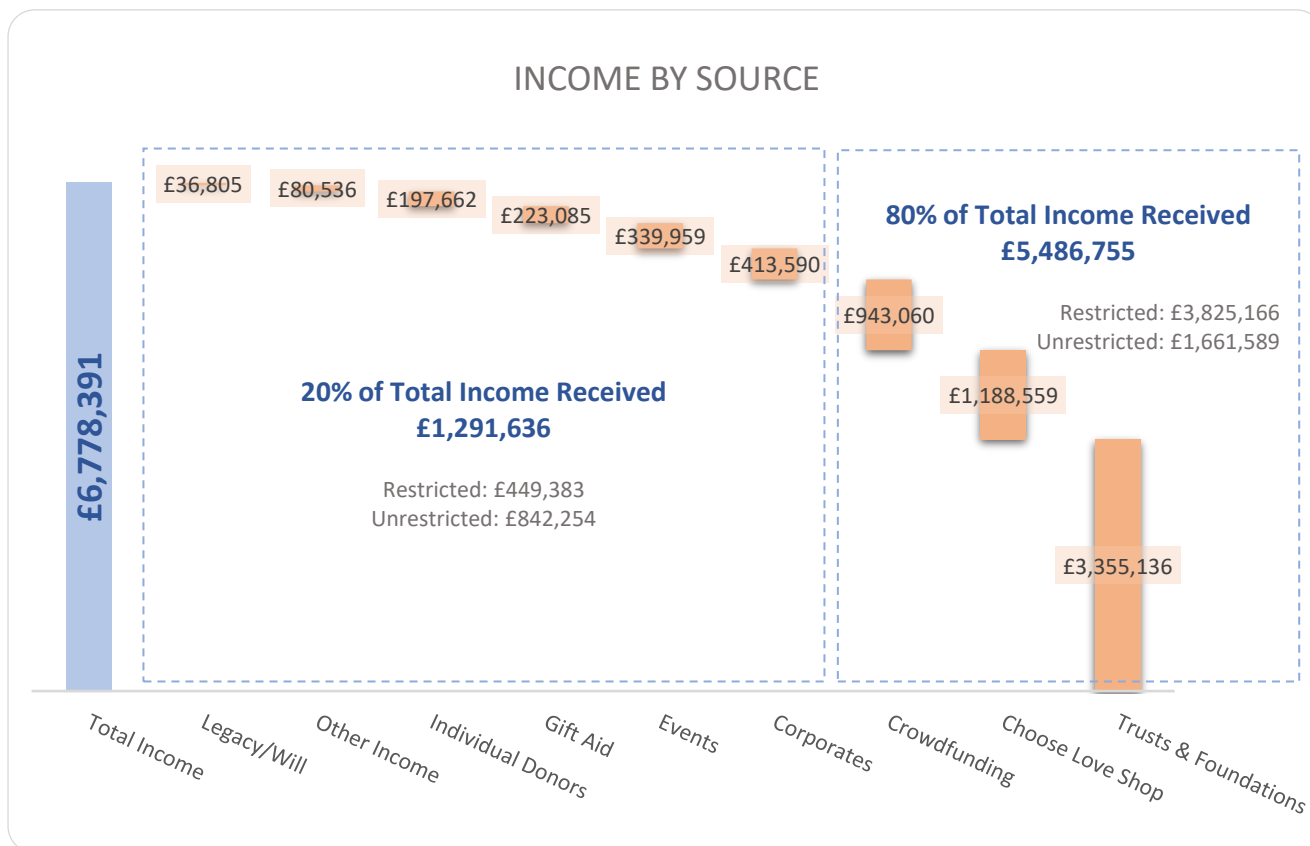
Expenditure/income ratio	108%	87%	97%
---------------------------------	------	-----	-----

	OPENING BALANCE	CLOSING BALANCE
2019	£1,471,824	£962,645



INCOME 2019

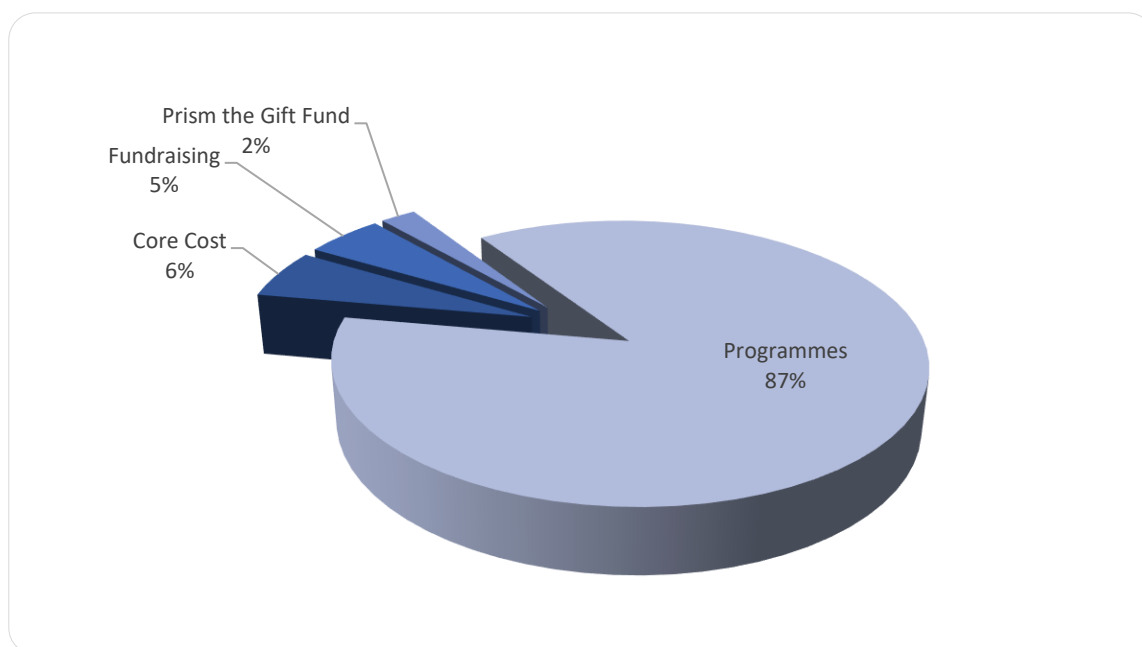
Type of income	Restricted	Unrestricted	Grand Total	Ratio
Standard Sources				
Trusts & Foundation	£2,528,998	£826,139	£3,355,136	49%
Corporates	£77,552	£336,038	£413,590	6%
Individual Donors	£120,447	£77,215	£197,662	3%
Other Sources				
Choose Love Shop	£1,188,559		£1,188,559	18%
Crowdfunding	£107,610	£835,450	£943,060	14%
Events	£122,168	£217,791	£339,959	5%
Gift Aid	£49,280	£173,805	£223,085	3%
Legacy/Will		£36,805	£36,805	3%
Other Income	£79,936	£600	£80,536	1%
Grand Total	£4,274,549	£2,503,842	£6,778,391	100%



EXPENDITURE 2019

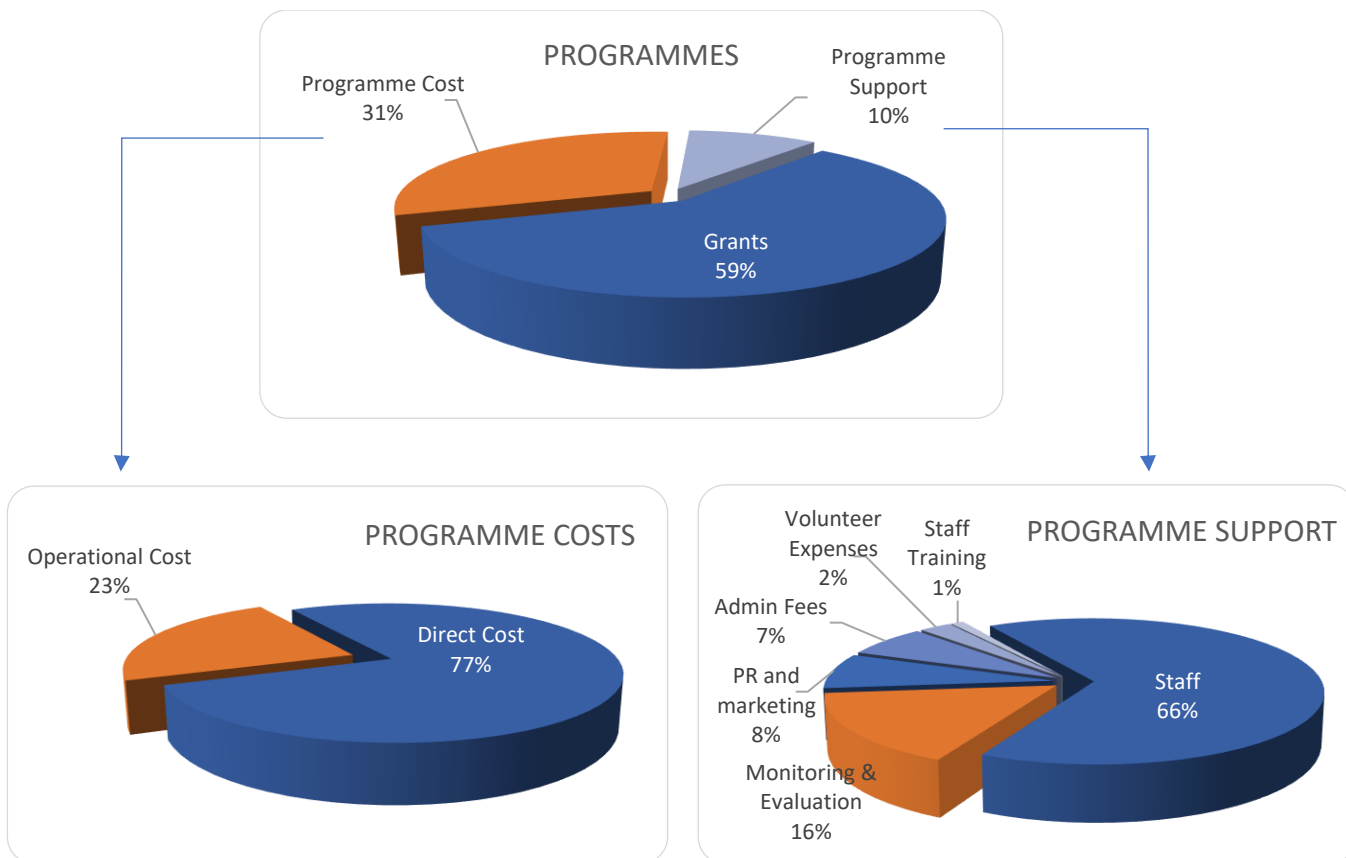
Expenditure key explaining Programmes and Core Cost in detail can be found on page 13.

Type of Expenditure		£
Programmes	Help Refugees' operations as well as grants towards self-managed projects and organisations outside of Help Refugees.	£6,371,372
Core Cost	London HQ, staff, operational cost – rent, bills, admin cost, marketing and legal cost.	£418,413
Fundraising	Event organisation, venue hire, travel cost to meet donors, consultancy fees for fundraisers, volunteers' cost.	£369,663
Prism the Gift Fund	Charitable umbrella providing administration of giving, finance and compliance management and governing structure, including board of trustees.	£169,899
Grand Total		£7,329,346



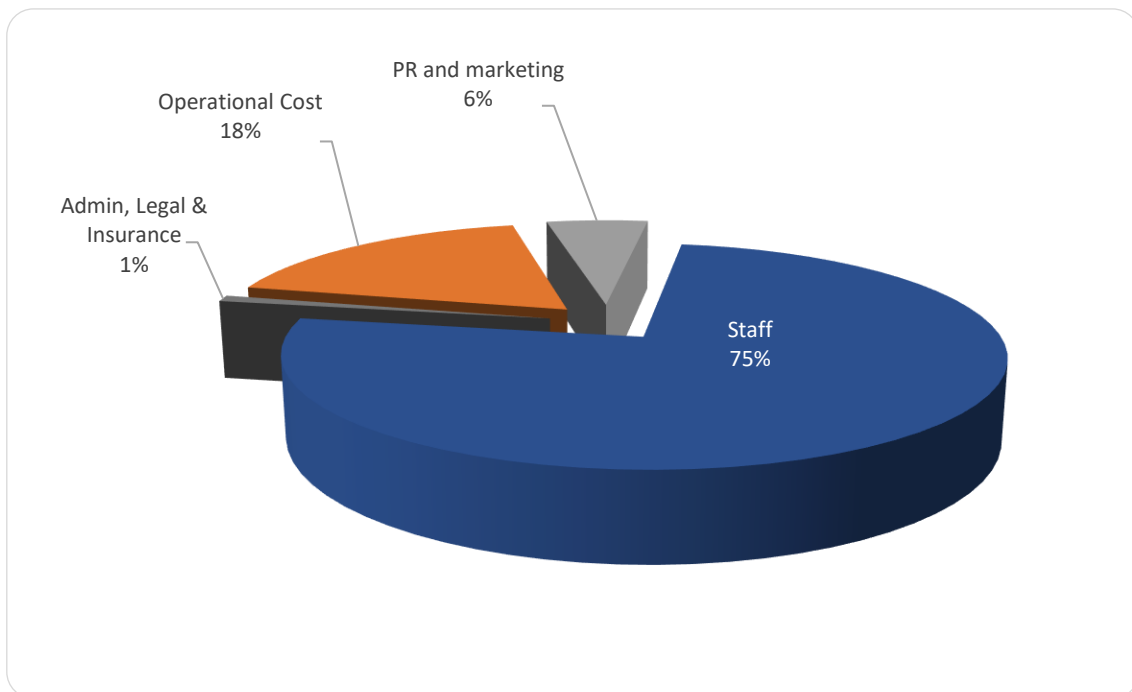
PROGRAMMES

Programmes		£
Grants		£3,745,565
Grants Total		£3,745,565
Programme Cost	Direct Cost	£1,534,089
	Operational Cost	£448,413
Programme Cost Total		£1,982,502
Programme Support	Staff	£422,205
	Monitoring & Evaluation	£103,356
	Volunteer Expenses	£16,861
	Staff Training	£6,768
	PR and marketing	£50,161
	Admin Fees	£43,956
Programme Support Total		£643,306
Grand Total		£6,371,372

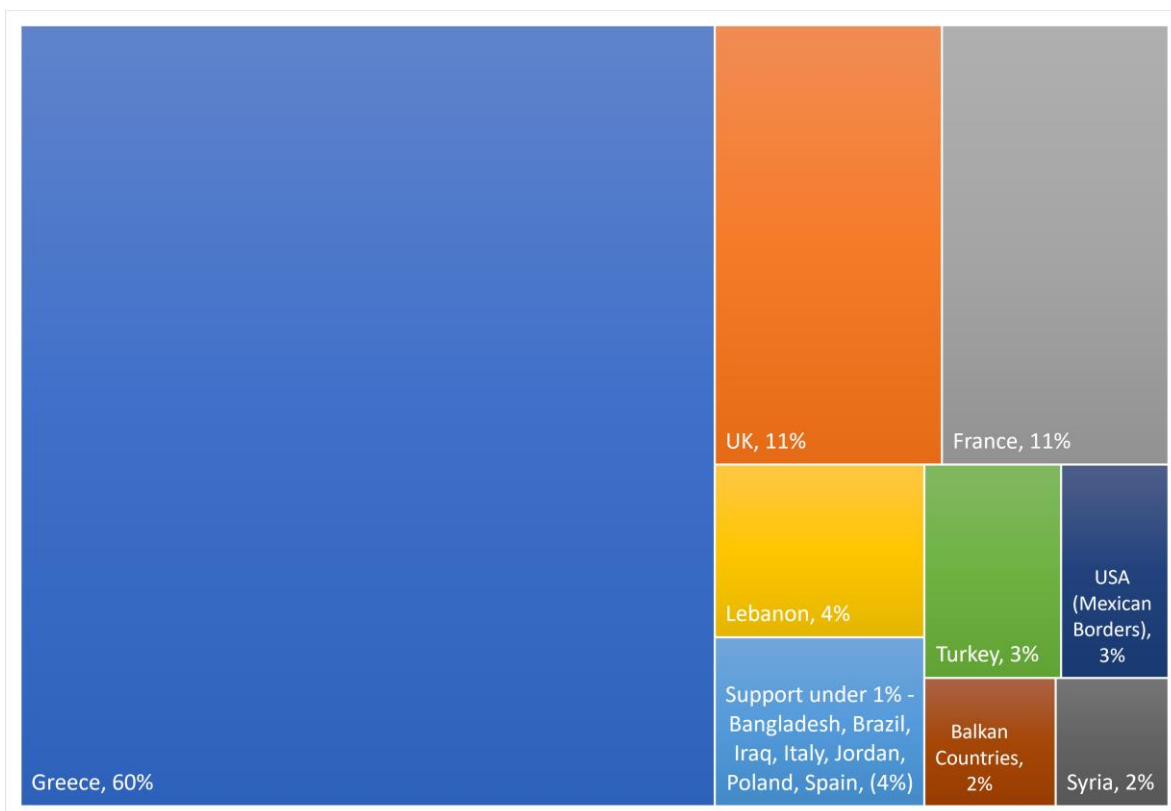
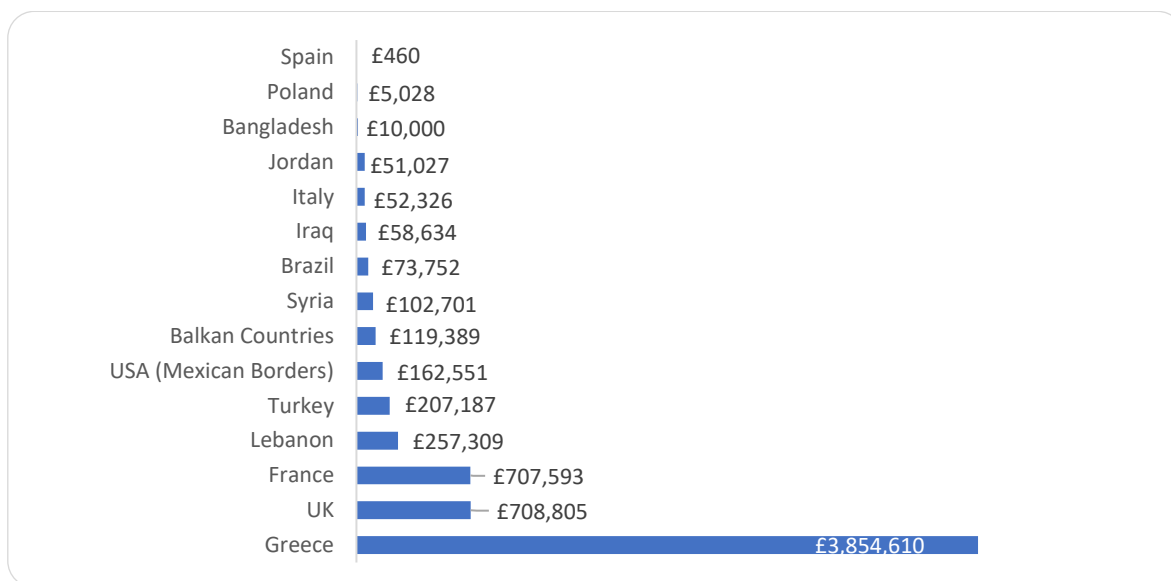


CORE COSTS

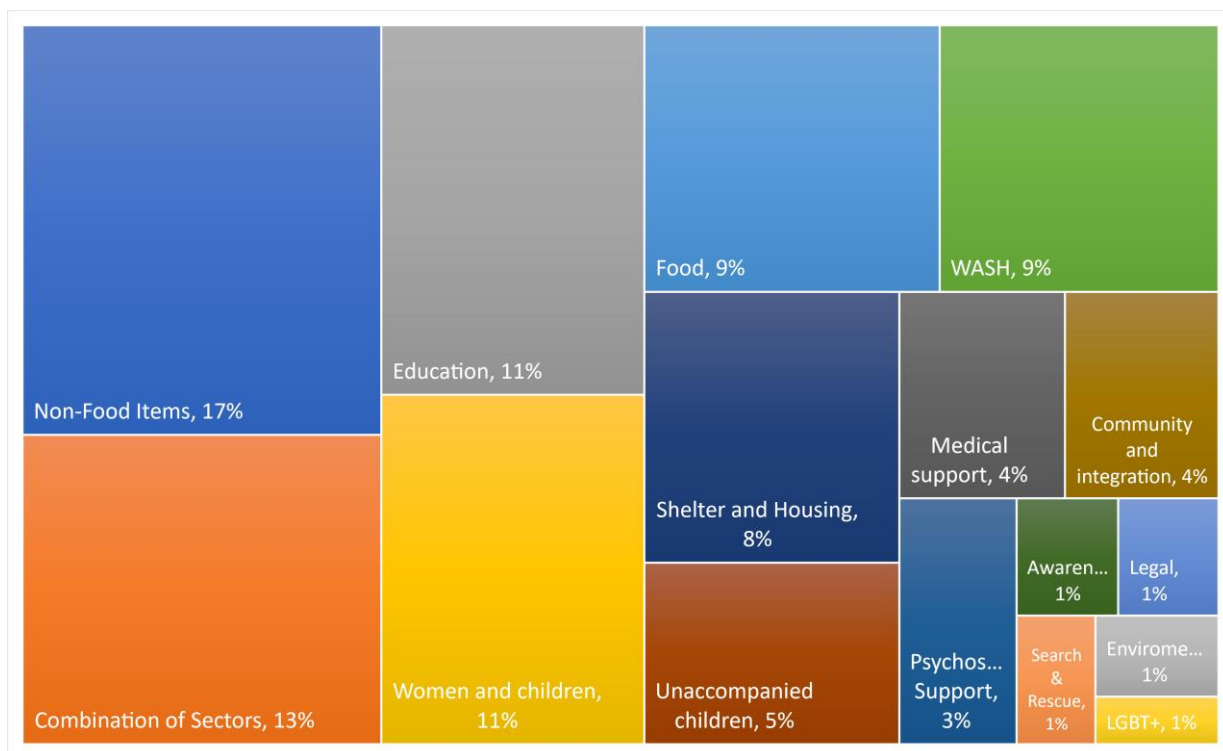
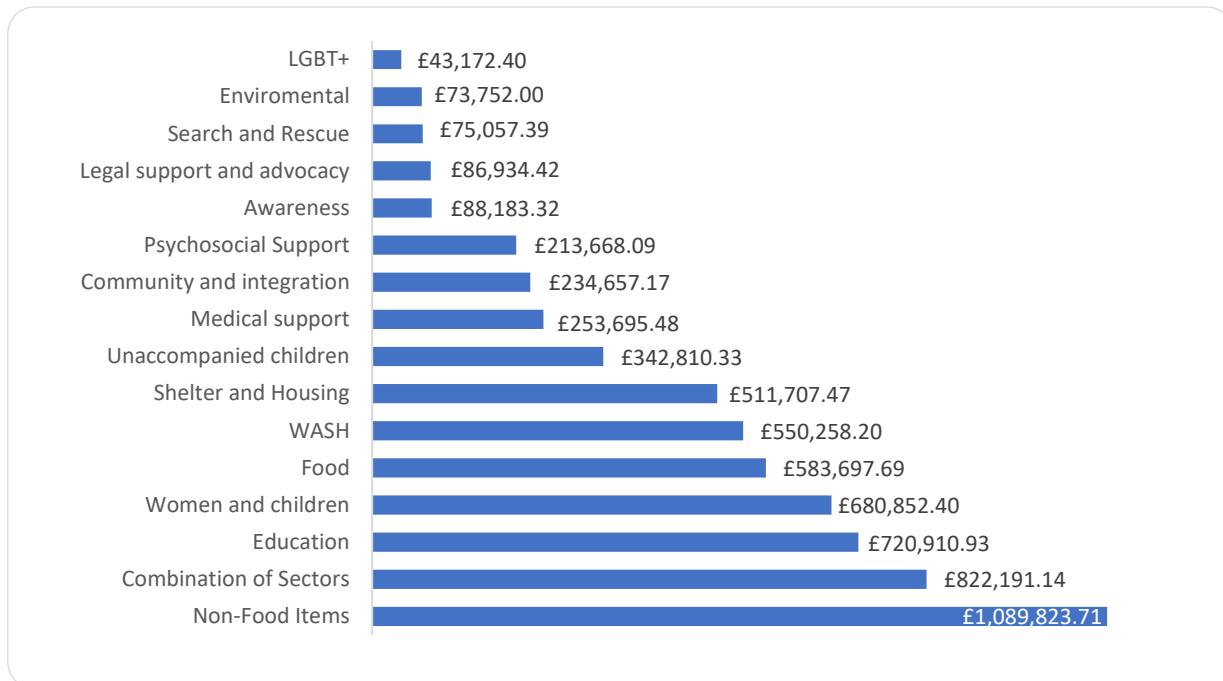
Core cost (London HQ)	£
Admin, Legal & Insurance Costs	£3,806
Operational Cost	£75,434
PR and marketing	£23,289
Staff	£315,884
Grand Total	£418,413



SUPPORT BY COUNTRY



SUPPORT BY SECTOR



PROGRAMMES SUPPORTED IN 2019

	Programmes	Country
1	Action for Education	Greece
2	Aidhoc	Greece
3	Alkyone	Greece
4	Amurtel	Greece
5	Are You Syrious	Croatia
6	Armonia	Greece
7	ARSIS Association for the Support of Youth	Greece
8	Asylum Justice	United Kingdom
9	Asylum Link Merseyside	United Kingdom
10	Attika Human Support	Greece
11	Avocats Sans Frontiers	Greece
12	Baobab Experience	Italy
13	Baobab	United Kingdom
14	Basmeh and Zaitooneh	Lebanon
15	Because We Carry	Greece
16	BelgrAid / Collective Aid	Bosnia, Serbia, France
17	Better Days for Moria	Greece
18	Borderline	Greece
19	Brixton Soup Kitchen (BSK)	United Kingdom
20	CESRT	Greece
21	CHEERing	Greece
22	Choose Love Inc	USA (Mexican Borders)
23	Code Your Future	United Kingdom
24	Comicdom	Greece
25	Coventry Asylum and Refugee Action Group	United Kingdom
26	Dentists 4 All / Seeds for humanity	Greece
27	Derbyshire Refugee Solidarity	United Kingdom
28	Dirty Girls	Greece
29	Drop in the Ocean	Greece
30	Dunkirk Refugee Women Centre	France
31	Echo100Plus	Greece
32	Elix	Greece
33	Emissa	Jordan, Turkey
34	Euro Relief	Greece
35	FAIR	Greece
36	Filoxenia International	Greece
37	Flying Seagulls	Bangladesh, Greece, Lebanon
38	FoodKind	Greece
39	Forge for Humanity	Greece
40	Free Movement Skateboarding	Greece
41	Glocal Roots	Greece
42	Good Chance Theatre	France, UK
43	Hand in Hand	Syria, Turkey (UK registered)

	Programmes	Country
44	Harmonia Project	Greece
45	Health Point Foundation	Greece
46	Hestia Hellas	Greece
47	Hip Hop Garden	United Kingdom
48	Hopetowns	United Kingdom
49	House of All	Bosnia
50	HumanRights360	Greece
51	IDA - Hope Hospital	Syria
52	IHA	Greece
53	Imagine Centre	Greece
54	IndiGo Volunteers	Worldwide
55	Injera Club	United Kingdom
56	Instituto Raoni	Brazil
57	InterVolve	Greece
58	Khora	Greece
59	Kobiety Wedrowne - Women on the Road programme	Poland
60	L'auberge Des Migrants	France
61	Lifting Hands International	Greece
62	Maison Sesame	France
63	Mazi Housing Project	Greece
64	MedEquali	Greece
65	Meena Centre	United Kingdom
66	Melissa Network	Greece
67	Molham Volunteers	Lebanon
68	Mosaik	Greece
69	Movement on the Ground	Greece
70	Omnes	Greece
71	One Happy Family	Greece
72	Orange House (ZAATAR)	Greece
73	Pampiraiki Support Initiative for Refugees & Migrants	Greece
74	Paris Refugee Ground Support	France
75	Perichoresis	Greece
76	Phone Credit 4 Refugees	France
77	Pikpa	Greece
78	Progetto20k	Italy
79	Project Elea Amke	Greece
80	Project MAMA	United Kingdom
81	Project Play (Donate4Refugees)	France
82	Ramadan Kitchen	Lebanon
83	RefuAid	United Kingdom
84	Refugee 4 Refugees	Greece
85	Refugee Aid Serbia	Serbia
86	Refugee Community Kitchen	France
87	Refugee Foundation Serbia	Serbia
88	Refugee Info Bus	France
89	Refugee Info Hub	United Kingdom
90	Refugee Law Clinic Berlin	Greece



	Programmes	Country
91	Refugee Rescue	Greece
92	Refugee Support Europe	Greece
93	Refugee Trauma Initiative	Greece
94	Refugee Youth Service France	France
95	Safe Passage	France
96	Salam - Lebanese Association for Development and Aid	Lebanon
97	Samos Volunteers	Greece
98	Say It Loud	United Kingdom
99	Second Tree	Greece
100	Shelter from the Storm	United Kingdom
101	Social Hacker	Greece
102	Solidarity Now	Greece
103	Sport For Refugees	Greece
104	Still I Rise	Greece
105	Street Kitchen	United Kingdom
106	Swiss Cross	Greece
107	Team Humanity	Greece
108	Thalassa of Solidarity	Greece
109	The Bike Project	United Kingdom
110	The Lotus Flower	Iraq
111	Velos	Greece
112	Volunteers for Humanity	Greece
113	WaterShed	Greece
114	We Are One	Greece
115	Welcome Cinema	United Kingdom
116	Women Now for Development	Lebanon
117	Young Roots	United Kingdom

TRUSTS AND FOUNDATIONS

SUPPORTING HELP REFUGEES IN 2019

(Donations over £1,000 / \$1,300)

Trusts and Foundations
Choose Love Inc. (Shapiro Foundation, Cold Mountain)
Christ Meal (Meal A Day)
Comic Relief
Convergence Network Inc
Esmee Fairbairn Foundation
Faversham & Villages Refugee Solidarity Group
Fonthill Foundation
Foundation for Change
Global Whole Being Fund (Rudolf Steiner Foundation)
Hollywood Foreign Press Association
Hopewell Fund
JMG Foundation
LUSH Limited
MSF Medecin Sans Frontiers
Open Society Foundation
The A Team Foundation
The Arnold Burton Trust
The Roddick Foundation
Vodafone Foundation

CORPORATES

SUPPORTING HELP REFUGEES IN 2019

(Donations over £1,000 / \$1,300)

Corporates
Anschutz Entertainment Group
Ashburn Estates Ltd
ASOS
Beggars UK Ltd
Campbell Tickell
Enigmatic Capital Limited
Erskine Records Limited
HypePeace Limited
KGH Nature
Kind Snacks UK Ltd
McVey & Murrricane
Not Actual Size
OllyStudio Limited
Onjenu Ltd
Print Club London Ltd
Regent Capital PLC
Walkers Books Ltd
Enterprise Holdings Foundation
SCDX Ltd



EXPENDITURE KEY

Expenditure Type	Category	Sub-category	Examples
Programmes	Grants		Grants to organisations outside of Help Refugees umbrella. Funding towards direct costs, operational costs or overheads.
	Programme Cost	Direct Cost	Products & services for beneficiaries. Direct payments to suppliers for food, tents, sleeping bags, hygienic packs, clothes, toys, nappies etc.
		Operational Cost	Premises costs, vehicle cost, bills, tax, distribution costs
	Programme Support	Staff	Consultancy fees and payroll costs for staff working directly on projects
		Monitoring & Evaluation	Flight tickets, travel, accommodation and food for staff responsible for M&E
		Volunteer Expenses	Food, travel and accommodation
		Staff Training	First Aid, safeguarding, asylum process workshop, field staff wellbeing workshop, etc.
		PR and marketing	Banners, leaflets, website costs, social media management cost etc.
		Admin Fees	Bank charges, insurance, other charges
	Core Cost		Staff
		Operational Cost	London office rent, bills, tax, infrastructure cost
		PR and marketing	Banners, leaflets, website costs, social media management cost
		Admin, Legal & Insurance Costs	Bank charges, Trademarks – brand protection, Legal advice, Insurance